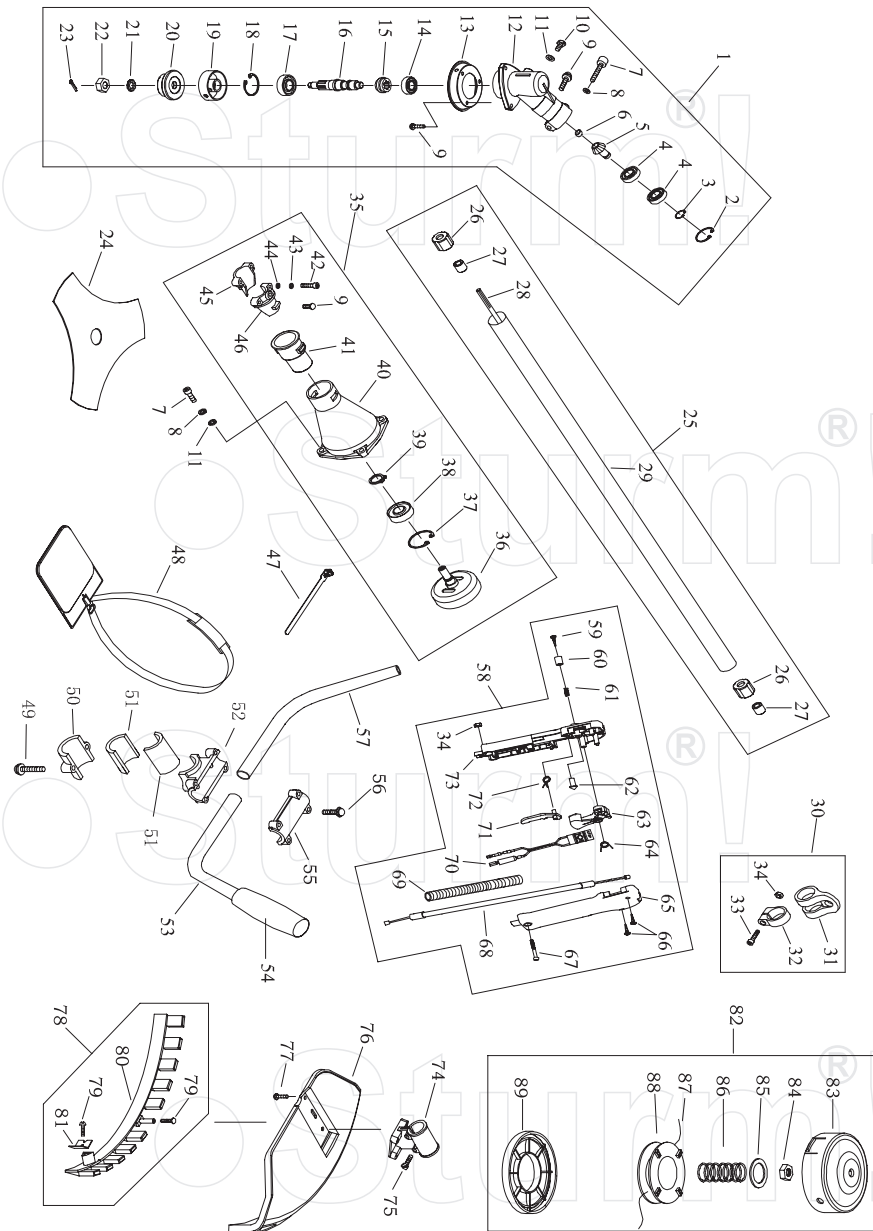


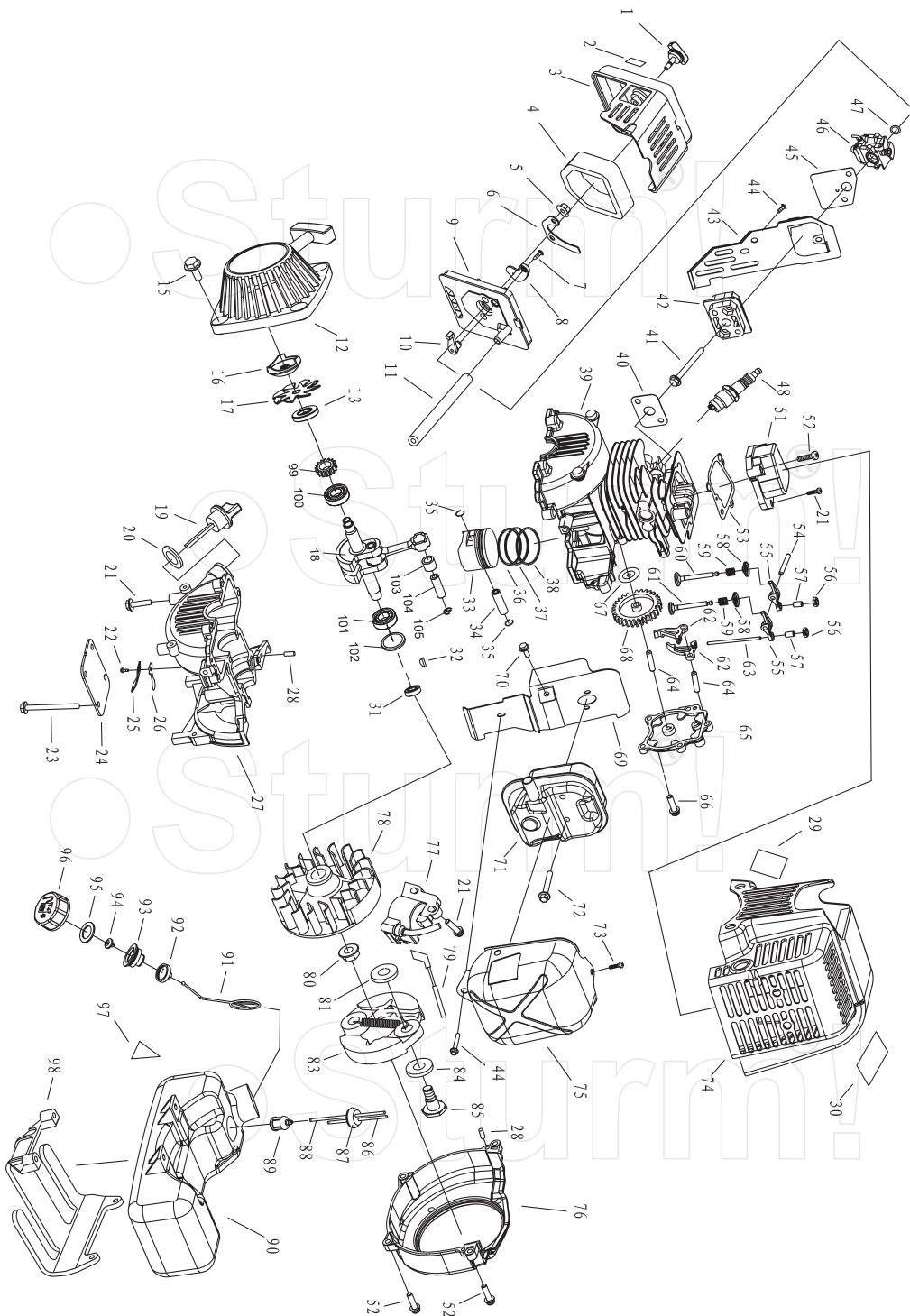
BT89314



No.	DESCRIPTION	No.	DESCRIPTION	No.	DESCRIPTION
1	GEAR CASE ASSY	31	HARNESSE CLAMP	61	SPRING
2	STOP RING 26	32	CLAMP	62	LOCK PIN
3	STOP RING 10	33	SCREW M5X20	63	HAND GRIP
4	BEARING 600-2RS/P5	34	NUT M5	64	SPRING
5	PINION	35	CLUTCH COMP.	65	BOX,RIGHT
6	STEEL CAP	36	CLUTCH DRUM COMP.	66	SCREW ST2.9X18
7	SCREW M6X20	37	STOP RING 35	67	SCREW M5X30
8	WASHER 6	38	BEARING 6202-2RS/P5	68	CABLE COMP.
9	SCREW M5X12	39	STOP RING 15	69	TUBE
10	BOLT M6X12	40	LINKER	70	STOP BUTTON COMP.
11	WASHER 6	41	RUBBER COVER	71	HAND GRIP
12	GEAR CASE	42	SCREW M5X25	72	SPRING
13	SAFELY GUARD	43	WASHER 5	73	BOX,LEFT
14	BEARING 6000/P5	44	WASHER 5	74	BRACKET
15	GEAR	45	CLAMP B	75	BOLT M5X30
16	GEAR SHAFT	46	CLAMP A	76	SAFELY GUARD
17	BEARING 6002-2RS/P5	47	WIRE CLAMP BAND	77	SCREW M5X16
18	STOP RING 32	48	HARNESSE ASSY	78	GUARD COMP.
19	HOLDER A	49	SCREW M6X25	79	SCREW ST4.2X16
20	HOLDER B	50	CAP,LOWER	80	GUARD
21	WASHER 10	51	RUBBER WASHER	81	BLADE
22	LEFT NUT	52	BRACKET	82	NYLON CUTTER HEAD
23	PIN 2X16	53	HANDLE	83	CASE
24	BLADE	54	GRIP LEFT	84	LEFT NUT A
25	PIPE COMP.	55	CAP,UPPER	85	WASHER
26	RUBBER COVER	56	BOLT M5X25	86	SPRING
27	OIL-BEARING	57	HANDLE	87	CORD
28	DRIVE SHAFT	58	LEVER ASSY	88	CORD HOLDER
29	PIPE	59	SCREW ST2.9X9.5	89	COVER
30	HOLDER ASSY	60	BUTTON		

RU091110-1

Sturm!



Engine for BT89314

No.	DESCRIPTION	NO.	DESCRIPTION	NO.	DESCRIPTION
1	SCREW	36	OIL RING	72	SCREW M5X50
2	SIGN	37	SECOND PISTON RING	73	SCREW M5X16
3	OUTSIDE COVER	38	FIRST PISTON RING	74	CYLINDER COVER
4	FILTER NET	39	CYLINDER	75	MUFFLE COVER
5	NUT M5	40	ADMITTING GASKET	76	FLY WHEEL COVER
6	BAFFLER	41	SCREW M5X75	77	COIL
7	SCREW ST4.2X12-F-H	42	ADMITTING PIPE	78	FLY WHEEL
8	CHOKE	43	BOARD	79	PARKING
9	INSIDE COVER	44	SCREW M5X8	80	NUT
10	CHOKE HANDLE	45	GASKET	81	GASKET
11	WINDPIPE	46	CARBURETOR	83	EXPANDER
12	STARTER	47	O RING 5X2.65	84	WASHER
13	SEAL	48	SPARK PLUG	85	SCREW PIN
15	SCREW M5X20	51	CYLINDER COVER	86	FUEL PIPE
16	START REEL	52	SCREW M5X25	87	PLUG
17	FAN	53	CYLINDER COVER GASKET	88	FUEL PIPE
18	GRANK SHAFT	54	ROCKER PIN	89	CLEANER
19	DIPSTICK	55	ROCKER	90	FUEL TANK
20	SEAL	56	ADJUST NUT	91	CHAIN
21	SCREW M5X16	57	JIB SEAT	92	END COVER
22	SCREW M3X8	58	SPRING SEAT	93	INSIDE COVER
23	SCREW M5X55	59	SPRING	94	INLET
24	BOARD	60	INPUT VALVE	95	GASKET
25	BOARD	61	OUTPUT VALVE	96	FUEL TANK LID
26	REED	62	BELOW ROCKER	97	FIRE SIGN
27	GRANK CASE	63	JIB	98	FUEL TANK BRACKET
28	PIN B4X8	64	PIN	99	GEAR
29	OIL SIGN	65	COVER	100	BEARING 6001-RS/P5
30	SIGN	66	SCREW M4X16	101	BEARING 601/P6
31	SEAL	67	BOARD	102	CHECK RING
32	KEY 3X5X13	68	CAM WHEEL	103	NEEDLE BEARING
33	PISTON	69	BOARD	104	PISTON PIN
34	PISTON PIN	70	SCREW M5X8	105	RING
35	RING	71	MUFFLE		

RU091110-1

Sturm!